

# Cooperative Park Master Plan

Columbia County

City of Dayton

Port of Columbia

Town of Starbuck



*Columbia County, Washington*

*Adopted 2018 Master Parks Plan Update*

*Columbia County – December, 2018*

*City of Dayton – December, 2018*

*Port of Columbia – December, 2018*

*Town of Starbuck –January, 2019*

# TABLE OF CONTENTS

---

Introduction	3
Approval	4
Background & History	5
Park & Recreation Types	6
Countywide Inventory	7
Public Involvement & Needs Analysis	13
Cooperative Mission, Goals & Priorities	14
Columbia County	
Inventory	15
Goals & Priorities	17
Level of Service Map	18
Capital Improvement Plan	19
City of Dayton	
Inventory	21
Goals & Priorities	25
Level of Service Map	30
Capital Improvement Plan	31
Port of Columbia	
Inventory	35
Goals & Priorities	37
Capital Improvement Plan	38
Town of Starbuck	
Inventory	39
Goals	42
Level of Service Map	43
Capital Improvement Plan	44
Cooperative Next Steps	45
Appendices	
A: Stakeholder Interviews & Survey Results	46

# INTRODUCTION

---

## PLANNING PROCESS

Columbia County in southeast Washington is rich with parks and recreation facilities and opportunities. The county is composed of prairies and forests, rivers and mountains. The county provides the community with a wide range of recreational activities, but also strives for more. In 2013, Columbia County, the City of Dayton, and the Port of Columbia came together to update all three of their Parks and Recreation Master Plans and to create a single document to be referenced in their comprehensive plans. The Town of Starbuck, located in Columbia County, was included as an appendix in the original plan. Starbuck actively participated in the 2018 update and requested to be formally included in the plan.

The following document was created with the help of students from Eastern Washington University, the four jurisdictions, stakeholders, and the community. This document was designed to serve three primary purposes: to create a consolidated inventory of parks and recreation lands, to identify and plan for the future recreational needs of the public, and to provide each jurisdiction with a Parks and Recreation Element in their comprehensive plans to be referenced for funding opportunities.

# APPROVAL

---

2018 Updated Cooperative Park Master Plan Adopted by:

Columbia County on December 17<sup>th</sup>, 2018

City of Dayton on December 19<sup>th</sup>, 2018

Port of Columbia on December 12<sup>th</sup> 2018

Town of Starbuck on January 8<sup>th</sup>, 2019

This copy of the Columbia County Cooperative Park Master Plan is the adopted plan including all edits and updates from the Port of Columbia, City of Dayton, Columbia County and the Town of Starbuck.

The original approval process required a SEPA determination, public approval for each jurisdiction, followed by consideration to formally adopt the plan by the Columbia County Commissioners, Dayton City Council, and the Port of Columbia Board of Commissioners.

The 2018 update also involved public input opportunities for each jurisdiction, followed by the plan's formal adoption by the Columbia County Commissioners, Dayton City Council, Town of Starbuck City Council, and the Port of Columbia Board of Commissioners.

## For more information please contact:

**Meagan Bailey, Planning Director**  
Columbia County  
City of Dayton

114 S. Second St.  
Dayton, WA 99328  
(509) 382-4676  
[meagan\\_bailey@co.columbia.wa.us](mailto:meagan_bailey@co.columbia.wa.us)

**Jennie Dickinson, Port Director**  
Port of Columbia

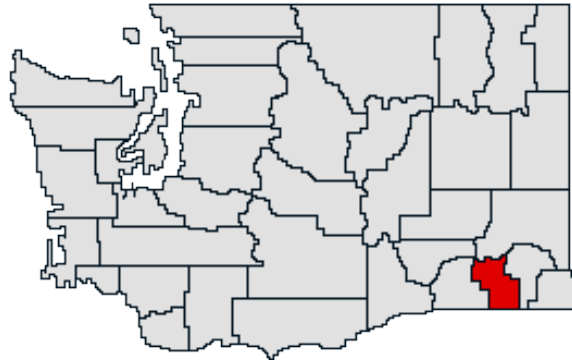
1 Port Way  
Dayton, WA 99328  
(509) 382-2577  
[jennie@portofcolumbia.org](mailto:jennie@portofcolumbia.org)



# BACKGROUND & HISTORY

---

## LOCATION & POPULATION



Columbia County is located in southeast Washington, bordering Whitman County to the north, Walla Walla County to the west, Garfield County to the east, and the state of Oregon to the south. The county has two population centers, the City of Dayton, and the Town of Starbuck. Dayton has a population of 2,526 and Starbuck 129, based on the 2010 census. The county has a total population of 4,078.



## IMPORTANCE OF HISTORY

The history of Columbia County is apparent in many of the parks and recreation opportunities. Columbia County was one of the first places settlers came to in Washington. Lewis and Clark camped east of where Dayton is today on their return trip. This rich history is evident in many of the parks and recreation sites and is a point of pride to the people of Columbia County.

# PARK & RECREATION TYPES

---

Columbia County has a wide variety of parks and recreation features serving the local community and visitors seeking outdoor/wilderness or “Historic Dayton” experiences. This inventory includes local, state, federal, non-profit, and privately owned parks and recreation facilities providing a wide spectrum of opportunity that exists in the community.

Three types of parks and recreation facilities are present in Columbia County:

## **COMMUNITY PARK**

Community Parks serve the immediate population in the area. Community Parks vary in size from less than one acre to about four acres. These parks are ideally located within a half mile of residential areas and are safely accessible by walking. At a minimum, Community Parks should have open space and playground equipment.

## **REGIONAL PARK**

Regional Parks serve the entire county and offer recreational opportunities to residents and tourists. In Columbia County, Regional Parks are between two and several thousand acres. These parks offer several different park and recreational opportunities to serve a broad spectrum of the public.

## **SPECIAL USE FACILITY**

These facilities or features are intended to serve specific recreational needs. The size and location of Special Use Areas varies according to use. Special Use Areas include trailheads, snow parks, ball field complexes, campgrounds, and other specific recreation facilities.

# COUNTYWIDE INVENTORY

---

Parks and Recreation land and facilities owned by Columbia County, the City of Dayton, the Town of Starbuck, and the Port of Columbia are separated into their own section in the document. The following inventory list shows these lands, while also including publicly and privately owned recreation lands within the county. The purpose of this inventory is to provide the public with a directory of parks and recreation facilities to be used in the creation of guidebooks and maps, and/or made available for online access. Condition was determined by site visit and website information.

Name	Type	Location	Operating Agency	Features	Size	Condition
Athletic Fields	Special Use Area	Dayton – West of Touchet River	Dayton School District	Baseball, Football, Track	11 acres	Good
Boldman House Museum	Special Use Area	Dayton	Dayton Historical Depot Society	Museum, Interpretive Information	Two structures .33 acres	Good
Caboose Park	Community Park	Dayton	City of Dayton	Caboose, Playground	.5 acres	Good
Camp Nancy Lee	Special Use Area	County	Kiwanis Club of Dayton	Cabin	Unknown	Fair
Camp Touchet	Special Use Area	County	Columbia Basin Baptist Association	Private Party Use, Overnight Facilities	80 acres	Good
Camp Wooten State Park	Regional Park	County	Washington State	Cabins, Day Use, Swimming, Fishing, Hiking, Tennis, Canoeing, Private Parties	40 acres	Good
Columbia County Fairgrounds	Regional Park	County	Columbia County	Horse Track, Tack, Pavilions	26 acres	Fair
Columbia County Shooting Association	Special Use Area	County	Private	Open Shooting Range – 100 Yard	5 acres	Good
Dayton Elementary School	Special Use Area	Dayton	Dayton School District	Playground, Softball, Open Space	2.73 acres	Good

<b>Name</b>	<b>Type</b>	<b>Location</b>	<b>Operating Agency</b>	<b>Features</b>	<b>Size</b>	<b>Condition</b>
Dayton High School	Special Use Area	Dayton	Dayton School District	Outdoor Basketball, Indoor Gym, Playfield	3.6 acres	Fair- some areas need improvement
Dayton Historic Train Depot	Special Use Area	Dayton	Dayton Historical Depot Society	Museum, Courtyard, Interpretive Information	2 buildings .5 acres	Good
Eckler Mountain Sno-Park	Special Use Area	County	Columbia County	Snowmobiling, Snowshoeing, Cross County Skiing, Parking	56 miles of trails	Good
Flour Mill Park	Community Park	Dayton	Banner Bank	Gazebo, Art, Interpretive Signs	1.4 acres	Good
Godman Trailhead & Campground	Special Use Area	County	U.S. Forest Service	Camping, Picnic Tables, Parking, Toilet, Trail Access	West Butte Trail	Good
Historic Dayton Pathway	Special Use Area	Dayton	City of Dayton	Pathway, Art	2 blocks	Good
Ladybug Campground	Special Use Area	County	U.S. Forest Service	Hunting, Hiking, Camping, Toilets, Picnic Tables	Wenaha-Tucannon Wilderness	Good
Lake Bryan	Regional Park	County	Multi-jurisdictional, Army Corps of Engineers	Boating, Kayaking, Canoeing, Swimming, Fishing	60 acres	Good
Last Resort	Special Use Area	County	Private	Camping, RV, Playground, Cabins, Access to Hunting, Hiking, Fishing	28 acres	Good
Lewis & Clark Trail State Park	Regional Park	County	Washington State	Camping, Day Use, Fishing, Swimming	37 acres	Good
Little Goose Dam & Lock	Regional Park	County	Army Corps of Engineers	Day Use, Visitor Center, Fish Ladder Viewing Area, Fish Cleaning Facility	2 acres	Good

<b>Name</b>	<b>Type</b>	<b>Location</b>	<b>Operating Agency</b>	<b>Features</b>	<b>Size</b>	<b>Condition</b>
Little Goose Landing	Regional Park	County	Army Corps of Engineers	Day Use, Camping, Boat Launch, Fishing	2 acres (+ access to 60 acres)	Good
Lyons Ferry Marina	Regional Park	County	Port of Columbia	Camping, RV, Day Use, Dog Park, Marina, Fishing, Store, Restaurant	17 acres	Fair- some areas need improvement
Meadow Creek Trailhead	Special Use Area	County	U.S. Forest Service	Off Road Vehicle Trails, Equestrian Facilities, Parking, Toilet, Picnic Tables, Mountain Biking	Meadow Creek Trail 3miles	Good
Middle Point Trailhead	Special Use Area	County	U.S. Forest Service	Challenging trail with waterfall and scenic vistas	5.5 mile round trip hiking trail	Good
Palus Artifact Museum	Special Use Area	Dayton	Blue Mountain Heritage Society	Museum, Interpretive Information	1 building .15 acres	Good
Panjab Trailhead & Campground	Special Use Area	County	U.S. Forest Service	Trail Access, Wildlife Viewing, Equestrian Facilities, Fire Rings, Toilets, Parking, Camping	Panjab Trail 5 miles	Good
Patit Creek Campsite	Special Use Area	County	Dayton Development Task Force	Interpretive Signs, Open Space	20 acres	Good
Pietrzycki City Park Complex	Regional Park	Dayton	City of Dayton	See Below	22.03 acres	See Below
<ul style="list-style-type: none"> <li>Dayton (Pietrzycki) City Park (Main Park Area)</li> </ul>	Regional Park	Dayton	City of Dayton	Playground, Open Space, Day Use Picnic Area, Tennis, Exercise Stations, Skate Park, Garden, Pickle Ball	6.18 acres	Fair- some areas need improvement

<b>Name</b>	<b>Type</b>	<b>Location</b>	<b>Operating Agency</b>	<b>Features</b>	<b>Size</b>	<b>Condition</b>
• Dayton City Pool	Special Use Area of Regional Park	Dayton	City of Dayton	Outdoor Pool	.7 acres	Fair Condition
• Dayton Juvenile Fish Pond and Frisbee Golf	Special Use Area of Regional Park	Dayton	City of Dayton	Frisbee Golf, Juvenile Fishing and Parking	15.15 acres	Good – Needs ADA Access
Rattlesnake Trailhead	Special Use Area	County	U.S. Forest Service	Parking, Trail Access, Toilet, Wildlife Viewing	Rattlesnake Trailhead 2.5 miles	Good
Rock Hill Trailhead	Special Use Area	Dayton	Port of Columbia	Hiking Trail	1.5 mile loop	Good
Sawtooth Trailhead	Special Use Area	County	U.S. Forest Service	Parking, Trail Access, Wildlife Viewing	Sawtooth Trail 14 miles	Good
Ski Bluewood	Special Use Area	County	Private	Skiing, Cross County, Hiking, Day Use	400+ acres	Good
Slick Ear Trailhead	Special Use Area	County	U.S. Forest Service	Limited Parking, Trail Access, Wildlife Viewing	Slick Ear Trail 1.5 miles	Good
Smith Hollow School House	Special Use Area	Dayton	Blue Mountain Heritage Society	Museum, Interpretive Information	1 building .74 acres	Good
Snake River	Regional Park	County	Natural Resource, Multi-jurisdictional	Boating, Kayaking, Canoeing, Swimming, Fishing	23.2 miles (within the county)	Good
Sports Complex	Special Use Area	Dayton	City of Dayton	Baseball, Softball	5.02 acres	Good
Starbuck Bell Park	Special Use Area	Starbuck	Town of Starbuck	Historic Bell and Picnic Tables	.25 acre	Fair
Starbuck School	Special Use Area	Starbuck	Starbuck School District	Playground, Baseball, Basketball, Open Space	2 acres	Good
Starbuck Jail Park	Special Use Area	Starbuck	Town of Starbuck	Historic Jail and Public Restroom	5,000 Sq. Ft.	Fair

<b>Name</b>	<b>Type</b>	<b>Location</b>	<b>Operating Agency</b>	<b>Features</b>	<b>Size</b>	<b>Condition</b>
Starbuck Railroad Park	Community Park	Starbuck	Town of Starbuck	Sports Court, Slide, Open Space	2 acres	Fair
Starbuck Tucannon River Park	Community Park	Starbuck	Town of Starbuck	Swing Set, Open Space	.5 acre	Fair
Teepee Trailhead	Special Use Area	County	U.S. Forest Service	Toilet, Parking, Trail Access, Wildlife Viewing, Equestrian Trails and Trailer Parking	East Butte Trail, Mt. Misery Trail, Turkey Creek Trail, Smooth Ridge Trail	Good
Tenacum Timbers	Special Use Area	County	Latter Day Saints	Private Party Use, Overnight Facilities	Unknown	Good
Texas Rapids	Regional Park	County	Army Corps of Engineers	Day Use, Primitive Camping, Boat Launch, Fishing	2 acres (+ access to 113 acres)	Good
Touchet Corral Sno-Park	Special Use Area	County	USFS	Snowmobiling, Snowshoeing, Cross Country Skiing, Parking	56 miles of trails	Good
Touchet River	Special Use Area	County	Natural Resource, Multi-jurisdictional, Private	Inner-tubing Swimming, Fishing, Lewis & Clark Trail State Park	55 miles	Good
Touchet River Dike Path	Special Use Area	Dayton/County	City of Dayton, Columbia County	Biking, Walking, Horseback Riding	1.45 miles	Good
Touchet Valley Golf Course	Special Use Area	County	Columbia County	Golf	35 acres	Fair
Tucannon Campground	Special Use Area	County	U.S. Forest Service	Camping, Parking, Toilets, Trail Access, Picnic Tables	Wenaha-Tucannon Wilderness	Good



<b>Name</b>	<b>Type</b>	<b>Location</b>	<b>Operating Agency</b>	<b>Features</b>	<b>Size</b>	<b>Condition</b>
Tucannon Habitat Management Area	Regional Park	County	Army Corps of Engineers	Day Use, Wildlife Viewing, Hiking, Fishing & Hunting Access	30 acres	Good
Tucannon Lakes	Special Use Area	County	Washington Department of Fish and Wildlife	Fishing, Fly Fishing	8 lakes	Good
Tucannon River	Special Use Area	County	Natural Resource, Multi-jurisdictional	Kayaking, Canoeing, Swimming, Fishing	62 miles	Good
Tucannon River RV Park	Special Use Area	County	Private	RV Park, Showers, Restrooms	33 Full Hookups	Good
Twin Buttes Trailhead	Special Use Area	County	U.S. Forest Service	Picnic Tables, Toilets, Parking, Trail Access, Fire Rings, Wildlife Viewing	Grizzly Bear Trail, East Butte Trail	Good
Umatilla National Forest	Regional Park	County	US Forest Service	Camping, Hiking, Snowmobiling, Cross Country Skiing, Snowshoeing, Mountain Biking, Fishing	1,406,513 acres (includes land outside the county)	Good

# PUBLIC INVOLVEMENT & NEEDS ANALYSIS

---

## PUBLIC INPUT

A variety of methods were used to garner input for the original Cooperative Park Master Plan.

A total of 13 stakeholders participated in discussion-style interviews to uncover areas of concern, interest and to pinpoint the area's best parks and recreational assets.

Public input was also gathered at two community events via a "dot exercise" and written surveys. The data was used to help understand public perception of parks and recreation in the county as a whole.

Detailed results may be found in the Public Involvement & Needs Analysis chapter of the 2014 Cooperative Park Master Plan. An overall analysis is provided below.

## ANALYSIS OF SURVEYS

The public surveys conducted at Turkey Bingo, the basketball game, via survey monkey, and by mail-in provided the three jurisdictions with the necessary information on the needs and wants of the community. This information combined with the feedback from stakeholders helped formulate multi-jurisdictional goals and priorities for Columbia County as well as more specific goals and priorities for Columbia County, City of Dayton, and Port of Columbia.

Findings in the public surveys showed the county has a wide variety of available parks and recreation facilities available. The community overall feels there are adequate parks and moderate adequacy in recreation opportunities.

Stakeholders and members of the community identified areas that need improvement or additions through the written survey and through the dot exercise. The residents of Columbia County surveyed were most interested in adding an indoor swimming pool. They also would like to see a large community recreation center to provide meeting and event space, as well as space for indoor sports activities. The members of the county also showed their support for outdoor recreation activities and would like to see them expanded. One of the main concerns of the county is providing information to residents and visitors about where parks and recreation facilities are located.

# COOPERATIVE MISSION, GOALS, & PRIORITIES

---

Utilizing the information gathered through the stakeholder interviews, the two public surveys, the online survey, and the mail-in survey, the jurisdictions formed this mission, goals, and priorities. These are meant to be a guiding vision for the cooperation between the jurisdictions to fulfill the needs and desires of Columbia County residents. In the following sections addressing each individual jurisdiction, the demands and needs assessed using public involvement were translated into goals, priorities, and capital improvement plans.

## MISSION

The mission of our multi-jurisdictional plan is to provide a framework for development, maintenance, and promotion of parks and recreation amenities within Columbia County.

## GOALS

- Increase recreational opportunities, which promote tourism to spur economic development.
- Meet the parks and recreation needs of the county residents.
- Provide equitable access to parks and recreation opportunities.
- Improve and promote existing parks and recreation.
- Regularly review parks and recreation facilities and services to evaluate maintenance requirements and to accommodate the future needs of the community.

## PRIORITIES

- Continue to develop recreation paths and trails in cooperation with the Blue Mountain Regional Trails Plan, adopted by the Walla Walla Valley MPO/SRTPO and Palouse RTPO, in February 2018.
- Develop a recreation map.
- Maintain recreation access to major waterways and state and federal lands.

# Columbia County



## COLUMBIA COUNTY INVENTORY

---

Columbia County provides a diverse land for parks and recreation. The variety of recreational opportunities gives county residents many options, if they have access to and knowledge of them. Approximately 1500 Columbia County residents live in the county, outside the incorporated areas of Dayton or Starbuck. These residents have a high interest in the recreation opportunities the county provides. While there are several private park and recreation areas in the county, Columbia County only owns and operates the two following facilities located on the outskirts of Dayton, as well as Eckler Mountain Sno-Park.

## COLUMBIA COUNTY FAIRGROUNDS

The Columbia County Fairgrounds is located just outside of Dayton. The Fairgrounds includes a horse track and pavilions. The 26-acre property hosts a variety of events and recreation activities year round. Friends of the Columbia County Fairgrounds is composed of citizens interested in working with the County to update, maintain and improve fairgrounds facilities.

## TOUCHET VALLEY GOLF COURSE

Adjacent to the Columbia County Fairgrounds is the Touchet Valley Golf Course. The 35-acre golf course is partially in Dayton and partially in county land just outside the city limits. The nine-hole course features 2,931 yards of golf from the longest tees for a par of 36. The course rating is 35.5 and it has a slope rating of 122. The fairways are open but tree lined, and the small greens are flat.



## TOUCHET RIVER DIKE PATH

The Touchet River Dike Path is a special use area pathway that runs along the Touchet River in Dayton and in Columbia County south of the city. It is intended for bike and pedestrian use. The dike and path were constructed as a form of flood protection to preserve residential and commercial assets in the event of a flood.

# COLUMBIA COUNTY GOALS & PRIORITIES

---

After evaluating the public surveys, Columbia County created the following list of Goals and Priorities for parks and recreation:

## GOALS

- To maintain and improve access to available recreation areas and activities for residents and tourists.
- Increase the visibility of available recreation areas and activities through a regional recreation map/brochure.
- Maintain acceptable levels of service for county-owned recreation facilities.
- Explore the viability of a bike/pedestrian path from Dayton to Waitsburg and of a Community Recreation Center.
- Work with landowners who are interested in creating or improving recreational opportunities.

## PRIORITIES

- Fairgrounds upgrades, connectivity, and usage.
- Golf course upgrades (irrigation) and visibility.
- Levee path maintenance.



# COLUMBIA COUNTY LEVEL OF SERVICE MAP



## Legend

- Parks & Rec Areas

0 2 4 8 Miles

1	ATHLETIC FIELDS	27	PATIT CREEK CAMPSITE
2	BELL PARK	28	PIETRZYCKI CITY PARK COMPLEX
3	BLUEWOOD SKI RESORT	29	RAILROAD PARK
4	BOLDMAN HOUSE MUSEUM	30	RATTLESNAKE TRAILHEAD
5	BRYANT PARK	31	SAWTOOTH TRAILHEAD
6	CAROSE PARK	32	SUCK EAR TRAILHEAD
7	CAMP NANCY LEE KIWANIS	33	SMITH HOLLOW HISTORIC SCHOOL HOUSE
8	CAMP TOUCHET	34	SNAKE RIVER
9	CAMP WOOTEN STATE PARK	35	SPORTS COMPLEX
10	COLUMBIA COUNTY GUN CLUB	36	STARBUCK JAIL
11	DAYTON ELEMENTARY	37	STARBUCK SCHOOL
12	DAYTON HIGH SCHOOL	38	TEEPER TRAILHEAD
13	DAYTON HISTORIC TRAIL DEPOT	39	TEXAS RAPIDS PARK
14	ECKLER MTN SNO PARK	40	TIMACUM TIMBERS' LDS CHURCH CAMP
15	FAIRGROUND MAIN ENTRANCE	41	TOUCHET CORRAL SNO PARK
16	FLOUR MILL PARK	42	TOUCHET RIVER
17	GOODMAN TRAILHEAD & CAMPGROUND	43	TOUCHET RIVER DIKE PATH
18	LADYBUG CAMPGROUND	44	TOUCHET VALLEY GOLF COURSE
19	LAKE BRYAN	45	TUCANNON CAMPGROUND
20	LEWIS AND CLARK TRAIL STATE PARK	46	TUCANNON HABITAT MANAGEMENT AREA
21	LITTLE GOOSE DAM USACE CORP OF ENGINEERS	47	TUCANNON LAKES
22	LYONS FERRY MARINA	48	TUCANNON RIVER
23	MEADOW CREEK TRAILHEAD	49	TUCANNON RIVER PARK
24	MIDDLE POINT TRAIL	50	TUCANNON RV PARK
25	PALUS ARTIFACT MUSEUM	51	TWIN BUTTES TRAILHEAD
26	PANJAB CAMPGROUND	52	UMATILLA NATIONAL FOREST

Sources: Esri, HERE, Garmin, Intermap, increment P Corp., GEBCO, USGS, FAO, NPS, NRCAN, GeoBase, IGN, Kadaster NL, Ordnance Survey, Esri Japan, METI, Esri China (Hong Kong), swisstopo, © OpenStreetMap contributors, and the GIS User Community



# COLUMBIA COUNTY CAPITAL IMPROVEMENT PLAN

The following chart shows the projects identified by Columbia County with completion expected by 2020. The Xs represent ideal completion dates. This chart is part of Columbia County's updated Capital Improvement Plan. (The Columbia County Commissioners, Planning Department and Columbia County Engineers agreed upon the projects listed in the Capital Improvement Plan after reviewing the information collected from public surveys.) The projects listed in the CIP were taken directly from the adopted CIP provided by the County Engineer and ranked by the County Planning Department after reviewing the surveys.

<b>Project Name</b>	<b>Location</b>	<b>Estimated Completion Year</b>	<b>Estimated Cost</b>	<b>Possible Revenue/Funding Sources</b>
Levee Pathway Maintenance	Dike	Ongoing	\$105,000	Capital improvement fund
Golf course irrigation – planning & engineering	Golf Course	2020	\$20,500	Rural excise sales tax fund
Golf course irrigation-construction	Golf Course	2021	\$650,000	Rural excise sales tax fund
Youth building remodel	Fairgrounds	2021	\$95,875	Rural excise sales tax fund
West Fairground RV park	Fairgrounds	2022	\$35,000	Rural excise sales tax fund
Fairground electrical upgrades	Fairgrounds	2019	\$35,000	Rural excise sales tax fund
Grandstand Drainage	Fairgrounds	2020	\$39,000	Rural excise sales tax fund
Fairgrounds midway improvement	Fairgrounds		\$250,000	Rural excise sales tax fund

<b>Project Name</b>	<b>Location</b>	<b>Estimated Completion Year</b>	<b>Estimated Cost</b>	<b>Possible Revenue/Funding Sources</b>
Dayton to Waitsburg bike path**	Multi-owned City and County	2021	\$6,500,000	WSDOT, state entities
Fairgrounds stormwater improvements	Fairgrounds	2018	\$75,000	Rural excise sales tax fund
Recreational facilities parking improvements		2022	\$190,000	Rural excise sales tax fund
West grandstand replacement	Fairgrounds	2022	\$1,200,000	Rural excise sales tax fund
East grandstand replacement	Fairgrounds	2023	\$165,000	Rural excise sales tax fund

\*\* The Blue Mountain Region Trails Plan was complete and fully adopted by the Walla Walla Valley MPO/SRTPO and Palouse RTPO in February, 2018. The plan will unlock federal, state, and private grant funding opportunities to begin implementation. A 9.7 mile waking/biking path between Waitsburg and Dayton is listed in the plan as a short-term project, to be completed in years one through four of plan implementation.

# City of Dayton



## DAYTON INVENTORY

---

The character of the city parks are a reflection of the community's history and desire to honor Dayton's heritage. The following park descriptions explain the park lands currently owned and operated by the City of Dayton, as well as highlights of those parks owned or operated by non-profit and private interests. Today, the citizens of Dayton celebrate its rich past by inviting guests to enjoy the city and parks with walking tours, annual festivals, and home tours that display Dayton's continued commitment to preservation and restoration. For the added pleasure of our visitors, Dayton offers first class accommodations, fine dining and interesting shops. Dayton is also in close proximity to some of the most prestigious wineries in Washington. Natural wonders such as Palouse Falls and the Blue Mountains are within a short drive.

## PIETRZYCKI CITY PARK

Pietrzycki City Park is the largest park in Dayton. This park has a total park area of 22 acres and is considered to be a regional park. There are many features within the park, including an outdoor pool, playground equipment, a Frisbee golf course, the juvenile fishing pond, baseball field, a day-use covered picnic area, tennis court, exercise stations, and a skate park. The location of this park provides access to the Touchet River Dike Path, the Touchet River, a foot bridge over the river to the Dayton School District athletic fields west of the river, and the Sports Complex south along the dike path.



**DAYTON CITY POOL** – Generally open June, July and August, the Dayton pool provided a variety of programs including: lap swim, swim team, lessons, aquacise, open swim, and night lap swim. The City closed the pool for the 2018 swim season after discovering cracks and heaving that could not be repaired in time for swim season. The facility is currently being assessed for repair and/or replacement options.

A Friends of the Dayton Community Pool group has formed and is submitting multiple grant applications for pool-related issues. The group is a nonprofit organization, operating under the umbrella of the Columbia County Community Network.

The Friends of the Dayton Community pool also secured grants from the Afterschool Program and the Blue Mountain Community Foundation, in 2018, to cover the costs of school bus transportation and free swim passes to send children to the Prescott Pool, 19 miles away. Columbia County Transportation provided free transportation for children not participating in the Afterschool Program.

**JUVENILE FISHING POND** - The fishing pond is located in Pietrzycki City Park. Each spring the pond is stocked with fish. Youth and adults with disabilities are encouraged to utilize this fishing area. This park area is considered a special use area within the regional park.

## **DAYTON DOG PARK**

A fenced play area, featuring separate spaces for small and large dogs, shade, and fresh water, is located in Petriezsky Park, just south of the fishing pond. The park, a joint effort of the Friends of the Dayton Dog Park, the City of Dayton and many volunteers, opened in the fall of 2017.

## SPORTS COMPLEX

The Sports Complex is located on the east side of the Touchet River, south of the Juvenile Fishing Pond and behind Dayton General Hospital. The Sports Complex has both a baseball field and softball field and is used for soccer in the fall. The Sports Complex covers a total of 5.02 acres.

## TOUCHET RIVER DIKE PATH

The Touchet River Dike Path is a special use area that runs along the Touchet River in Dayton. This partially-paved pathway, intended for bike and pedestrian use, is 1.5 miles long..

## CABOOSE PARK

Located on North 1st Street, one-half block north of Main Street, is Caboose Park which features a train caboose and children's playground equipment. Caboose Park covers a half-acre and is easily accessible from Historic Downtown Dayton on Main Street and the northeast residential area of the city. A \$65,000 Sherwood Trust Grant, awarded in 2018 will allow for future development to include landscaping, additional playground equipment and the possible addition of a splash pad.

## FLOUR MILL PARK

Located on Main Street, this downtown Dayton park borders the Touchet River. The park is a wonderful place for visitors to stop for lunch in the park gazebo, view local art, or rest on park benches. The park also is a trailhead to the Touchet River Dike Path connecting to Pietrzycki Park. Public restrooms and parking are provided for visitors to the Historic Downtown Dayton.

## DAYTON HISTORIC TRAIN DEPOT

Located east of Caboose Park, facing North 2nd Street, and adjacent to the railroad tracks, the Historic Dayton Train Depot has been preserved to showcase the history of Dayton and houses an historic museum and gift shop. The adjoining open courtyard serves Dayton residents and visitors with a Saturday's Market and music during the warm months and a shaded place to enjoy the outdoors on a hot summer day. Dayton's first year-round, ADA-compliant public restrooms, conveniently accessible to downtown visitors, were added in 2016.

## BOLDMAN HOUSE MUSEUM

The Boldman House Museum and Garden has a mission to bring life to the family home of Miss Gladys M. Boldman through restoration, conservation, interpretation, and education. It is listed on the Local, State and National Historic Registers as the Brining/Boldman House. The original house was built in 1880 and started as a small three-room home. It is located at 410 North 1<sup>st</sup> Street on the north side of Dayton.

## SMITH HOLLOW SCHOOL

The Blue Mountain Heritage Society renovated the historic Smith Hollow School as a museum showcasing the history of education in the county. The school was moved from its original site eight miles north of Dayton, on Smith Hollow Road, to its current location at 113 North Front Street in 2010. A cabin, built in 1898 for a soldier returning from the Spanish American War, was deconstructed and rebuilt on the site in 2018.

# DAYTON GOALS & POLICIES

---

After conducting public surveys, the City of Dayton created the following list of Goals and Priorities:

## GOAL 1: PARK & RECREATION PLANNING

Plan current and future parks and recreation facilities in a manner that is responsive to the needs of the community and accommodates future growth.

- Policy 1.1: Public input through citizen involvement shall be provided in all phases of parks planning.
- Policy 1.2: Regularly review parks and recreation facilities and services to evaluate maintenance requirements and to assess the future needs of the community.
- Policy 1.3: Study land development patterns in the urbanized area and take measures to provide for future recreational areas. This could include the outright purchase of land for neighborhood parks or a requirement that a developer set aside a reasonable amount of land for open space or recreation facilities.
- Policy 1.4: Examine neighborhood areas that are not adequately served by recreational facilities, such as neighborhood parks, and pursue a means to correct those deficiencies.
- Policy 1.5: Actively seek out alternative funding sources for development and future maintenance of park and recreation facilities.
- Policy 1.6: Coordinate park and recreation needs with Columbia County, School District, Port of Columbia, non-profit organizations and funding sources.
- Policy 1.7: Coordinate park planning, acquisition and development with other City projects and programs.
- Policy 1.8: Actively seek out agreements with utility providers and the Port for the use of utility easements and rail road for trail and trailhead purposes.
- Policy 1.9: Encourage and support volunteer efforts to maintain and enhance programs, sites, and facilities.
- Policy 1.10: Evaluate the impacts of new development projects on the City's parks, recreation, and open space resources through the SEPA environmental review process, identify potential significant adverse impacts of the development, and take appropriate steps to mitigate any reduction in such services.



Policy 1.11: Require development projects along designated trail routes to incorporate the trail or a trailhead connection as part of the project.

Policy 1.12: Place priority on maximizing grants, alternative sources of funding, and inter-agency cooperative arrangements to develop the City's park, open space, and trail resources.

Policy 1.13: Public services and facilities should be developed and timed to meet projected needs and demands of the public in a manner that ensures highest quality and fiscal responsibility.

Policy 1.14: Ensure that all park and recreation facilities are ADA compliant.

## GOAL 2: PARKS AND OPEN SPACE

Acquire and develop an interconnected system of multi-functional parks, trails, recreation facilities, and open spaces that is attractive, safe, and available to all segments of the City's population.

Policy 2.1: Place a priority on the revitalization and improvement of existing parks and recreation facilities.

Policy 2.2: Provide parks and recreation facilities that are needed, locally unique in character, historically significant, interconnected, inclusive, accessible, and financially feasible to maintain.

Policy 2.3: Market and promote parks and recreation facilities and the benefits of parks and recreation to residents of and visitors to the community to increase awareness, health, participation, tourism, and donations.

Policy 2.4: Develop and continue partnerships with other public agencies and the private sector to meet the demand for parks and recreational facilities in the City.

Policy 2.5: The protection or acquisition of outstanding scenic vistas and areas of unique features should be encouraged in order to safeguard their recreational value. Documented historical and archaeological sites should be protected.

## GOAL 3: TRAILS

Develop a trails plan that provides access to significant environmental features and historic landmarks.

Policy 3.1: Work with Columbia County, other agencies, non-profit organizations, and private property owners; addressing protection, expanded and developed access, trail enhancement, and/or acquisition of lands necessary for implementation of non-motorized recreational use trails.

Policy 3.2: Where terrain and conditions permit public access, work in partnership with the development community to provide opportunities for public connections and access points to trails system.

Policy 3.3: Create a comprehensive system of multipurpose off-road trails using alignments through public landholdings as well as cooperating private properties where appropriate.

Policy 3.4: Link residential neighborhoods and downtown to trails and trailhead facilities through bike and pedestrian routes.

Policy 3.5: Furnish trail systems with appropriate supporting trailhead improvements that include interpretive and directory signage systems, rest stops, drinking fountains, restrooms, parking and loading areas, water, and other services.

Policy 3.6: Where appropriate, locate trailheads at or in conjunction with park sites, schools, and other community facilities to increase local area access to the trail system and reduce duplication of supporting improvements.

Policy 3.7: Develop trail improvements of a design and development standard that is easy to maintain and access by maintenance, security, and other appropriate personnel, equipment, and vehicles.

Policy 3.8: The protection or acquisition of outstanding scenic vistas and areas of unique features should be encouraged in order to safeguard their recreational value. Additionally, documented historical and archaeological sites should be protected.

## GOAL 4: PARKS MAINTENANCE

Maintain parks and recreation facilities in a manner that is responsive to the site, and balances the needs of the community with available funding.

Policy 4.1: Actively seek out alternative funding sources for the maintenance of park and recreation facilities.

Policy 4.2: Continually seek operational efficiencies to ensure that parks and recreation facilities are provided to the community in the most cost effective manner possible.

Policy 4.3: Ensure that park and recreation facilities are used, operated, and maintained in a manner that is consistent with best management practices and have a no net loss impact on the local and regional environment/natural systems.

Policy 4.4: Annually inspect existing facilities to ensure they are safe for public use.

## GOAL 5: RECREATION PROGRAM SERVICES

Recreation programs and services shall be based on the needs and interests of the community; promoting opportunities, healthy living and daily exercise.

Policy 5.1: Work with other recreation organizations to develop and facilitate efficient and cooperative programming among the public, commercial, and nonprofit entities.

Policy 5.2: Programs shall provide opportunities for various proficiency levels, ability, socio-economic levels, ages, and gender.

Policy 5.3: Market and promote recreation program opportunities and the benefits of parks and recreation to residents and visitors of the community.

Policy 5.4: Expand services to meet the needs of the community by securing alternative funding sources.

## GOAL 6: ORGANIZATIONAL DEVELOPMENT

Volunteers and staff members shall represent the City of Dayton in a favorable manner and exhibit skills and values of the City including: community, creativity, excellence, passion, integrity and service.

Policy 1: Recruit, select, supervise, provide training opportunities for volunteers and staff that further professional skills and city values.

Policy 2: Encourage staff and volunteers to strengthen relationships with community groups and organizations by exhibiting professional skills and city values.

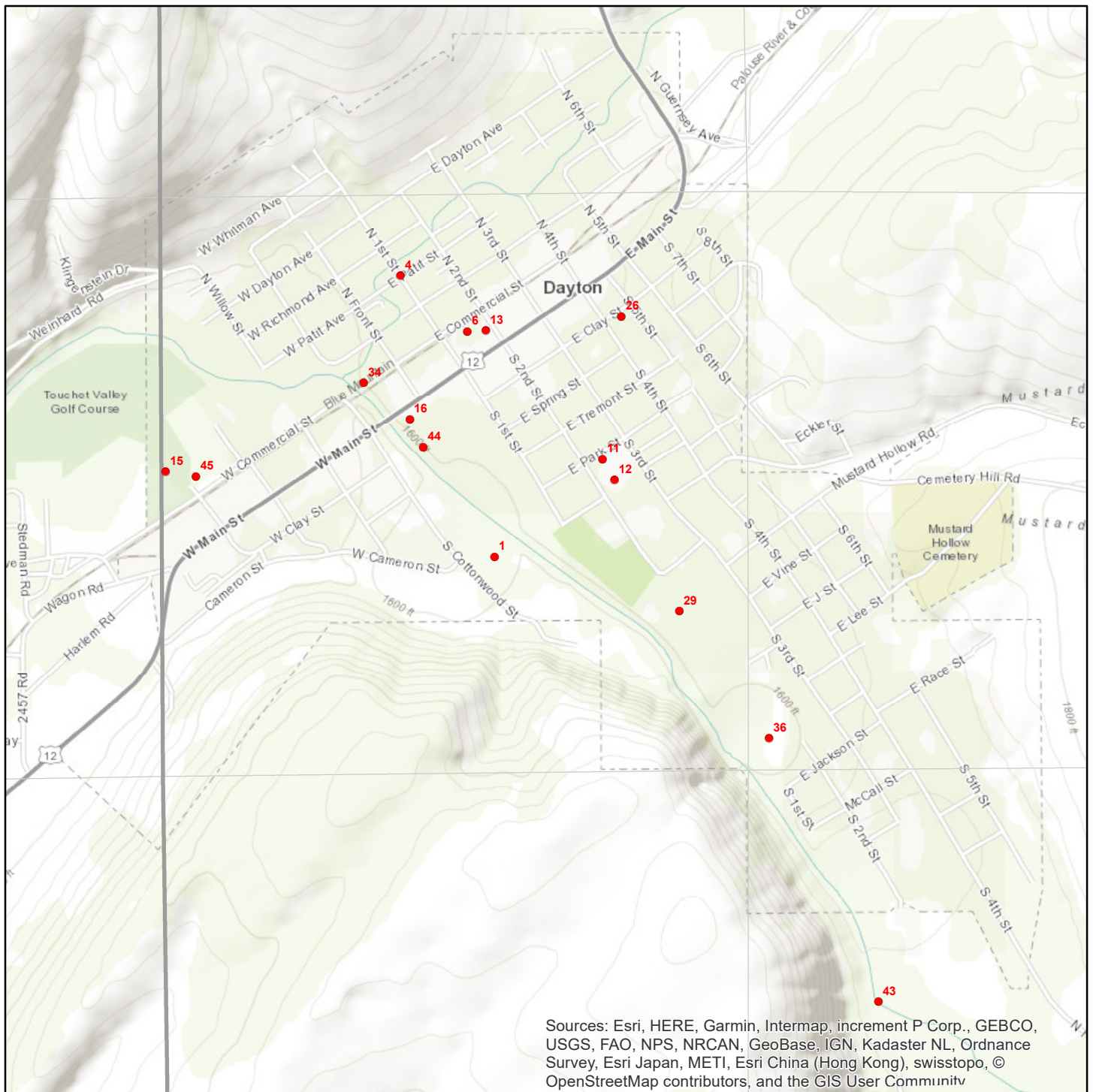
Policy 3: Ensure that volunteer and staff efforts are recognized and appreciated.

Policy 4: Promote open lines of communication to staff and both internal and external customers through a variety of methods including writings, meetings, and other means.

## PRIORITIES

- Swimming pool improvements/reconstruction
- Create a Park & Recreation Map and wayfinding signage **\*\*in progress\*\***
- Maintain existing parks and recreational facilities in a good condition
- Develop a Dog Park **\*\*completed\*\***
- Complete build-out of Caboose Park **\*\*in progress\*\***
- Expand the Historic Dayton Bike and Pedestrian Trail and other trails **\*\*planning stages\*\***
- Develop a Community Center
- Improve Sports Complex
- Create ADA compliant recreational facilities and restrooms

**Note:** Development of a Dog Park was listed on the original Cooperative Park Plan Priorities List and was completed prior to this 2018 update. The build-out of Caboose Park is underway, with the addition of new ADA compliant bathrooms and a parking area already complete.



# DAYTON LEVEL OF SERVICE MAP

## Legend

• Parks & Rec Areas



0 0.2 0.4 0.8 Miles

1	ATHLETIC FIELDS
4	BOLDMAN HOUSE MUSEUM
6	CABOOSE PARK
11	DAYTON ELEMENTARY
12	DAYTON HIGH SCHOOL
13	DAYTON HISTORIC TRAIL DEPOT
15	FAIRGROUND MAIN ENTRANCE
16	FLOUR MILL PARK
26	PALUS ARTIFACT MUSEUM
29	PIETRZYCKI CITY PARK COMPLEX
34	SMITH HOLLOW HISTORIC SCHOOL HOUSE
36	SPORTS COMPLEX
43	TOUCHET RIVER
44	TOUCHET RIVER DIKE PATH
45	TOUCHET VALLEY GOLF COURSE

# DAYTON CAPITAL IMPROVEMENT PLAN

---

The following table lists the parks and recreation projects identified in the updated City of Dayton Capital Improvement Plan. The table identifies the projects, their location, operating agency, costs, funding, and estimated completion year. These projects were included in the plan by Dayton City Council and Staff after public surveys identified areas of need. Funding sources include the Recreation and Conservation office (RCO), Dayton Development Task Force (DDTF), other grants, taxes, donations, park district formation, Blue Mountain Heritage Society, Dayton Historical Depot Society, School District Bond, user fees, and volunteers.

<b>Project Name</b>	<b>Location</b>	<b>Operating Agency</b>	<b>Estimated Completion Year</b>	<b>Estimated Project Cost</b>	<b>Possible Revenue Sources</b>
County Wide Recreational Map	N/A	Lead - TBD	2020	\$20,000	RCO, DDTF, other grants, county, port & city taxes, donations, volunteers
Pietrzycki Park Frisbee Golf course signage	Pietrzycki City Park	City of Dayton	2020	\$3,000	RCO, other grants, park district formation, taxes, donations, volunteers
Fishing Pond ADA Accessibility	Next to Pietrzcki Park	City of Dayton	2020	\$5,000	RCO, DDTF, other grants, park district formation, taxes, donations, volunteers
Caboose Park splash pad	Caboose Park Next to N 1 <sup>st</sup> St.	Dayton Devel. Task Force (DDTF)		\$75,000	RCO, DDTF, other grants, park district formation, taxes, donations, volunteers
Caboose Park Parking	Caboose Park/Alley	City of Dayton	2020	\$25,000	RCO, DDTF, other grants, park district formation, taxes, donations, volunteers

<b>Project Name</b>	<b>Location</b>	<b>Operating Agency</b>	<b>Estimated Completion Year</b>	<b>Estimated Project Cost</b>	<b>Possible Revenue Sources</b>
Smith Hollow Historic School House Landscape and shoreline restoration	On-site - Front St & Touchet River	Blue Mountain Heritage Society	2021	\$15,000	Blue Mountain Heritage Society, RCO, DDTF, other grants, park district formation, taxes, donations, volunteers
Flour Mill Park Restrooms	Main St.	Banner Bank/ R Whipple/ City of Dayton	2019	\$30,000	RCO, DDTF, other grants, park district formation, taxes, donations, volunteers
Pietrzycki Park Playground	Dayton	City of Dayton	2021	\$40,000	RCO, park district formation, donations, volunteers
Camping Area	Dayton TBD	TBD	2022	\$80,000	RCO, user fees, park district formation, donations
Pietrzycki Park Swimming Pool	Dayton	City of Dayton	2020	\$1-4 million	RCO, user fees, park district formation, donations
Pietrzycki Park Water Feature & Splash Pad	Dayton	City of Dayton	2021	\$100,000	RCO, park district formation, donations, volunteers
Flour Mill Park Public art	Dayton	Banner Bank	2022	\$20,000	RCO, DDTF, other grants, park district formation, taxes, donations, volunteers
Touchet/Patit path (acquisition or easements required)	Dayton at confluence of Touchet and Patit (SE)	City of Dayton	2023	\$100,000	RCO, DDTF, other grants, park district formation, taxes, donations, volunteers



<b>Project Name</b>	<b>Location</b>	<b>Operating Agency</b>	<b>Estimated Completion Year</b>	<b>Estimated Project Cost</b>	<b>Possible Revenue Sources</b>
Historic Dayton Bike/ Pedestrian trail extensions within city limits – Phase I	Dayton - generally along Commercial Street	City of Dayton	2023	\$200,000	RCO, DDTF, other grants, park district formation, taxes, donations, volunteers
Historic Dayton Bike/ Pedestrian bridge trail extension over Touchet River Phase 2	Dayton - generally along Commercial Street	City of Dayton	2024	\$20,000 feasibility – Full cost TBD	RCO, DDTF, other grants, park district formation, taxes, donations, volunteers
Touchet River Dike Path extension – South of Main & West of river	Dayton	City of Dayton	2022	TBD	RCO, DDTF, other grants, park district formation, taxes, donations, volunteers
Community Center	Dayton	TBD	Feasibility 2016 Construction 2024-34	\$1,000,000+	RCO, School District, DDTF, other grants, park district formation, taxes, donations, volunteers
Touchet River Path Extension North & West of Main St. (southwest side of river)	Dayton	City of Dayton/ Columbia County/ private	2024	TBD	RCO, DDTF, other grants, park district formation, taxes, donations, volunteers
Regulation-Size Soccer Field	Dayton	Dayton School District	TBD	TBD	RCO, School District Bond, DDTF, other grants, park

					district formation, taxes, donations, volunteers
Additional Gymnasium	Dayton	Dayton School District	TBD	TBD	RCO, School District Bond, DDTF, other grants, park district formation, taxes, donations, volunteers

# Port of Columbia



## PORT OF COLUMBIA INVENTORY

---

The Port of Columbia is a small county port that operates out of Dayton. The Port leases property along the Snake River from the US Army Corps of Engineers that provides parks and recreation opportunities for residents and visitors on the north side of Columbia County.

### LYONS FERRY MARINA

Lyons Ferry Marina is located on the Snake River on the northern border of Columbia County. The marina is a total of 17 acres but provides access to 23 miles of river within the county. The site offers camping, RV spaces, rental cabins, day use, laundry facilities, a playground, a small dog park, an ADA accessible fishing dock, fish cleaning, restrooms, a boat launch, moorages, supply store, and restaurant. The Port has completed a Facilities Plan for future improvements to the Lyons Ferry Marina site.



## ROCK HILL TRAILHEAD

The Port-owned Rock Hill Industrial Park includes a 34.71 acre hillside parcel that is not suitable for industrial development. Volunteers have carved out a 1.5 mile packed-soil loop trail in the hillside which includes a mid-point level area with a beautiful view of Dayton. The trail has a few benches along the way, and travels through shrubs and grass.



# PORT OF COLUMBIA GOALS & PRIORITIES

---

Following public surveys, Port of Columbia staff developed the following Goals and Priorities:

## 1. Maintain access to the Snake River for recreational use by the public

Objective 1- Continue lease of Lyons Ferry Marina property from the US Army Corps of Engineers.

Objective 2- Operate Lyons Ferry Marina facility in a manner that allows access to the river for as many members of the public as possible.

## 2. Maintain and Improve Lyons Ferry Marina Facility and Infrastructure

Objective 1- Maintain and replace aging facilities as needed to retain a quality recreation experience for the public.

Objective 2- Install new facilities to keep up with the demands of the modern recreational public.

## 3. Increase the number of visitors to Lyons Ferry Marina

Objective 1- Maintain facilities in a manner that is attractive to the public.

Objective 2- Market facilities in cooperation with concessionaire, the City of Dayton, Columbia County, and the Town of Starbuck through a county-wide recreational map and other marketing programs.

## 4. Create additional recreation opportunities for Columbia County residents .

Objective 1- Design and construct “Rails with Trails” multi-use path between Dayton and Waitsburg.

Objective 2- Assist other municipalities with implementation of trail opportunities as determined through the Blue Mountain Regional Trails Plan.

Objective 3- Market trail opportunities to the public.

# PORT OF COLUMBIA CAPITAL IMPROVEMENT PLAN

---

After surveying the community, the Port of Columbia Board developed a Capital Improvement Plan identifying future projects. The following table lists the projects, estimated year of completion, cost, and funding sources. Funding sources include the Port of Columbia, concessionaire, and the Recreation and Conservation Office (RCO).

<b>Project/Facility**</b>	<b>Estimated Year of Completion</b>	<b>Estimated Project Cost</b>	<b>Possible Revenue Sources</b>
Upland Restroom Replacement	2020-2022	\$150,000	RCO/Port
Boat Moorage Replacement	2024-2026	\$1,000,000	RCO/Port
Breakwater Replacement	2030	\$1,000,000	RCO/Port
Rehabilitate and Expand Boat Launch	2019-2020	\$200,000	RCO/Port
Design Dayton to Waitsburg Path	2019-2020	\$650,000	WSDOT/NPS (National Park Service)
Construct Dayton to Waitsburg Path	2021-2022	\$6,500,000	WSDOT/RCO/Port

**NOTE:** Playground, laundry facilities and rental cabins were listed priorities in the 2014 Port of Columbia Capital Improvement Plan and were completed prior to the 2018 Parks & Recreation Master Plan update.



# TOWN OF STARBUCK, WA

---

## STARBUCK INVENTORY:

Starbuck is classified as a town and is the second incorporated area within Columbia County. It is located about 20 miles northwest of Dayton near the confluence of the Tucannon and Snake rivers. The Tucannon River runs along the west side of the town. Starbuck was once a booming railroad town in the early 1900s. Since then, the town has dwindled down to a small population of 129, based on the 2010 U.S. Census.

The Town of Starbuck decided not to be included in the main portion of the 2014 Cooperative Parks Master Plan, and did not participate in the original surveys, as they had no parks projects planned at that time. The Town elected to become a part of the plan during the 2018 update process.



## TUCANNON RIVER PARK

Tucannon River Park lies at the west end of town along the Tucannon River and has picnic tables, a swing set, and approximately one-half acre of open space.

## BELL PARK

Bell Park lies in Starbuck's historic downtown area. A monument displaying Starbuck's historic bell, dedicated to the town by W.H. Starbuck at the turn of the century, is the focal point of the park. Bell park is 10,000 square feet and is conveniently located beside the historic Zinc Building, which was purchased and renovated by C.M. (Mort) Bishop in the 1980s and is used as a venue for local events. Bell Park contains picnic tables and is located next to the public restrooms and historic jail.

## JAIL PARK

The town's historic jail, located on Front Street, is available for public view. The Starbuck logo was painted on the jail by the late Wilma Fletcher in the late 1980s. A public restroom and Bell Park are located nearby. James Smith, Sheriff of Starbuck in the 1920s, was shot and killed inside the jail on October 19, 1928, while tending to a prisoner. The gun had been slipped through the bars by an unknown subject. It is a community goal to place a monument in Sheriff Smith's honor on the site.





## RAILROAD PARK

Railroad Park lies along the now-abandoned Union Pacific Railroad right-of-way. It includes approximately two acres of open space, making it the largest park in Starbuck. Amenities include a fenced, concrete court that can be used for basketball, volleyball, skating and tennis, a slide, and picnic tables.

## STARBUCK SCHOOL

Starbuck School is a K-8 grade public school located in the Town of Starbuck. The school grounds cover approximately two acres which include a playground, baseball field, basketball court and open space.

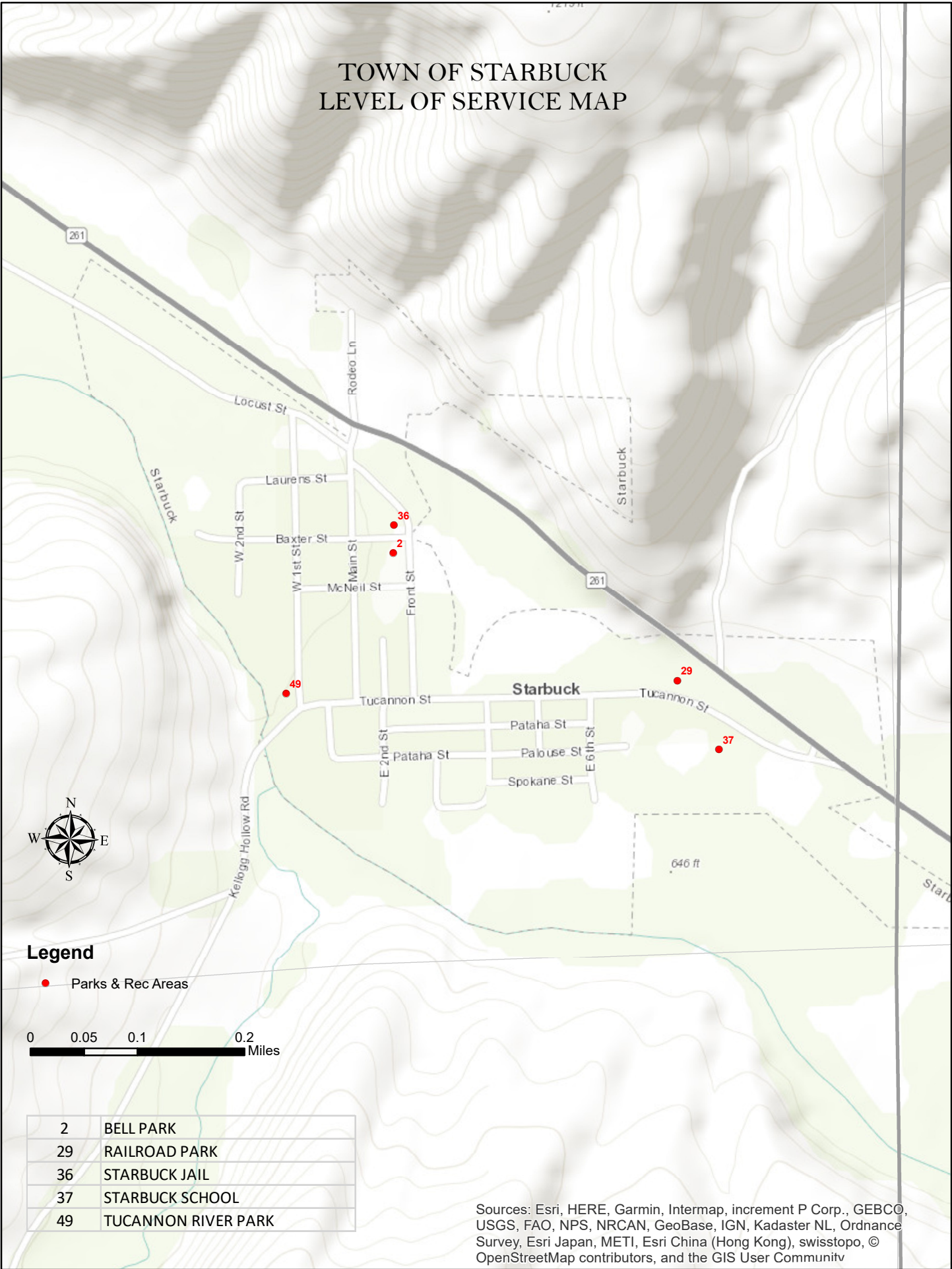
# TOWN OF STARBUCK GOALS

---

## GOALS

- Provide safe places for children to play and for groups to meet for recreational purposes.
- Open and improve access to the Tucannon river through publicly-owned lands, for fishing and recreational opportunities.
- Provide safe pedestrian trails and recreational areas that incorporate the scenic and rural aspects of the community.
- Maintain Starbuck's historic downtown area in a clean and attractive manner to make the community attractive to tourists.

TOWN OF STARBUCK  
LEVEL OF SERVICE MAP



## TOWN OF STARBUCK CAPITAL IMPROVEMENT PLAN

---

<b>Project Name</b>	<b>Location</b>	<b>Operating Agency</b>	<b>Estimated Completion Year</b>	<b>Estimated Project Cost</b>	<b>Possible Revenue Sources</b>
Bench Replacement	Railroad Park	Town of Starbuck	2019	\$600	Memorial fund
Addition of Restrooms	Railroad Park	Town of Starbuck	2023	\$10,000	Park Fund
Tennis Court and Playground Improvements	Railroad Park	Town of Starbuck	2021	\$2,500	Park fund
Invasive Weed Management	All City Parks	Town of Starbuck	Ongoing	\$2,400/yr	Park & Cemetery Fund
Sheriff Smith Memorial	Jail Park	Town of Starbuck	2020	\$4000	Memoriall Fund

## COOPERATIVE NEXT STEPS

---

The purpose of writing a cooperative plan is to ensure that this small county is successful in implementing plans and serving the community with excellent parks and recreation features. These next steps provide some guidance to ensure that the four jurisdictions work together efficiently.

1. Form a Cooperative Park Committee that includes representatives from all four jurisdictions or utilize an existing organization to serve this function.
2. Determine the best method for communicating existing park and recreation opportunities to both residents and visitors.
3. Develop a recreation map using information from this plan.
4. Use the inventory and map to maintain access to waterways, state, and federal lands.
5. Work cooperatively to obtain grants and funding, as needed.

# APPENDIX A: 2014 PUBLIC SURVEY RESULTS

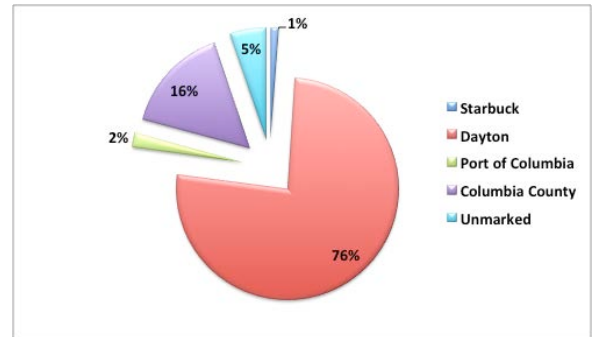
---

## WRITTEN SURVEY RESULTS

(96 Participants)

### 1. Which area do you identify with most?

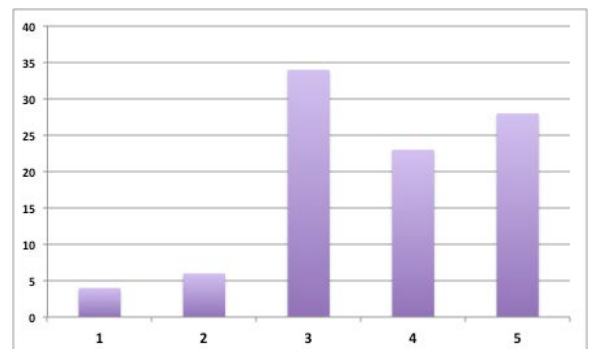
73 - Dayton  
15 - Columbia County  
5 - Unmarked  
2 - Port of Columbia  
1 - Starbuck



### 2. Do you think there are adequate park facilities where you live?

1 being low & 5 being high

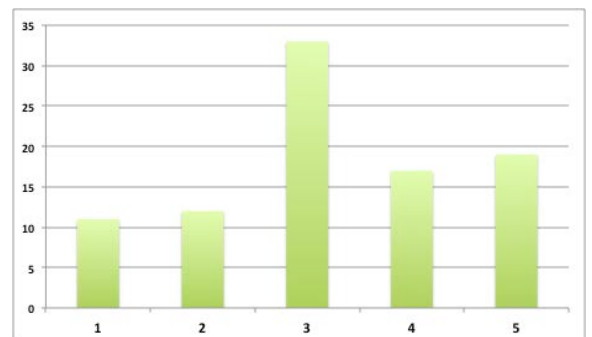
5 - 28  
4 - 23  
3 - 34  
2 - 6  
1 - 4



### 3. Do you think there are adequate recreation facilities and options to serve your needs?

1 being low & 5 being high

5 - 19  
4 - 17  
3 - 33  
2 - 12  
1 - 11



### 4. What are the most desired missing assets for parks and recreation in the area?

*See appendix A for full range of answers*

### 5. What existing parks and recreation features should be improved next?

*See appendix A for full range of answers*

6. Would you be willing to pay a tax or user fee to support new parks and/ or park facilities and the cost of maintenance?

1 being low & 5 being high

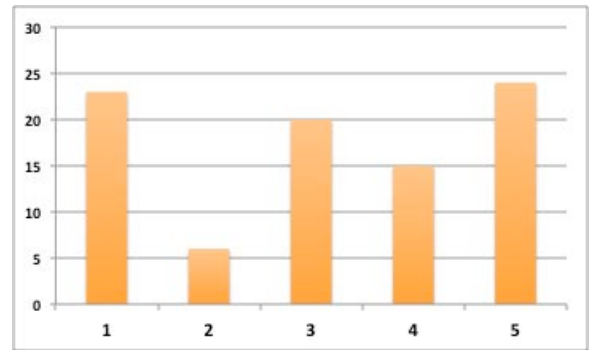
5 - 24

4 - 15

3 - 20

2 - 6

1 - 23



## DOT EXERCISE RESULTS

The results of the dot exercise are listed in the chart below.

Rank	Feature or Activity	Total Dots
1	Indoor Swimming Pool	86
2	Community Recreation Center	35
3	Camping	27
4	ORV/ATV/Dirt Bike Trails	27
5	Fishing	26
6	Hunting	24
7	Outdoor Swimming Pool	23
8	Skiing	23
9	Boating	19
10	Recreation Events	19
11	City to City Connection Trails	19
12	Mountain Bike Trails	18
13	Playground	15
14	Water Trails	14
15	Hiking	14
16	Golfing	14
17	Bowling Alley (Write-in)	13
18	Dog Park	11
19	City Trails and Sidewalks	10
20	Snowmobiling	10
21	Outdoor Education	9
22	Cross Country Skiing	9
23	Skateboard Park	8
24	RV Park	7
25	Cabin Rentals	7
26	Marina	6
27	Disk Golf	6
28	Horseback Riding/Trails (Write-in)	6
29	Bicycle Lanes & Racks	4
30	Snow Shoeing	4
31	Go Cart Trails (Write-in)	1
32	Drive-in Movie Theater (Write-in)	1
33	Soccer (Write-in)	1
34	Roller Skating Rink (Write-in)	1
35	Fairgrounds (Write-in)	1



## ANALYSIS OF SURVEYS

The public surveys conducted at Turkey Bingo, the basketball game, via survey monkey, and by mail-in provided the three jurisdictions with the necessary information on the needs and wants of the community. This information combined with the feedback from stakeholders helped formulate multi-jurisdictional goals and priorities for Columbia County as well as more specific goals and priorities for Columbia County, City of Dayton, and Port of Columbia.

Findings in the public surveys showed the county has a wide variety of available parks and recreation facilities available. The community overall feels there are adequate parks and moderate adequacy in recreation opportunities.

Stakeholders and members of the community identified areas that need improvement or additions through the written survey and through the dot exercise. The residents of Columbia County surveyed were most interested in adding an indoor swimming pool. They also would like to see a large community recreation center to provide meeting and event space, as well as space for indoor sports activities. The members of the county also showed their support for outdoor recreation activities and would like to see them expanded. One of the main concerns of the county is providing information to residents and visitors about where parks and recreation facilities are.

**BEFORE THE BOARD OF COLUMBIA COUNTY COMMISSIONERS  
RESOLUTION NO. 2018—54**

**A RESOLUTION TO THE BOARD OF COUNTY COMMISSIONERS,  
COLUMBIA COUNTY, WASHINGTON ADOPTING THE 2018 UPDATE  
OF THE COOPERATIVE PARK MASTER PLAN IN CONJUNCTURE  
WITH THE CITY OF DAYTON AND THE PORT OF COLUMBIA**

**WHEREAS**, the City of Dayton, Columbia County, and Port of Columbia worked simultaneously in 2014 to create the original Cooperative Park Master Plan; and,

**WHEREAS**, the purpose of updating parks and recreation plans is to assess the parks and recreation facilities current use and repair levels and plan for the current and future recreation needs of the community; and,

**WHEREAS**, in order to remain eligible and competitive for grant opportunities, recreation plans such as the Cooperative Park Master Plan must be updated every five years; and,

**WHEREAS**, each involved agency reviewed the current Cooperative Park Master Plan and suggested edits to ensure accuracy of current information; and,

**WHEREAS**, Columbia County Planning acted as lead for this project update, and coordinated all requested updates into one coherent document; and,

**WHEREAS**, the Columbia County Planning Commission held a duly advertised public hearing on December 10<sup>th</sup>, 2018 to take testimony for or against the proposed amendments to the plan; and,

**WHEREAS**, the Columbia County Planning Commission recommended approval of the joint plan after review of a draft of the plan; and,

**WHEREAS**, the Columbia County Commissioners recognize the Columbia County Planning Commission's abilities to provide sound advice in land use issues together with providing the greatest possible benefits for the citizens of Columbia County.


**NOW, THEREFORE**, the County Commission of Columbia County, Washington does hereby resolve as follows:


Section 1. The Cooperative Park Master Plan is hereby adopted as the Park and Recreational Plan for the Columbia County, Washington and that a certified copy of this resolution and the Cooperative Park Master Plan shall be filed with the County Clerk for public use and inspection, and shall be filed with the State of Washington Recreation and Conservation Office.

Section 2. This Cooperative Park Master Plan shall be included as part of the County's 2020 Comprehensive Plan update by reference.

**PASSED** by the County Commission of Columbia County, Washington this 17<sup>th</sup> day of December, 2018.

COLUMBIA COUNTY BOARD OF COMMISSIONERS

  
Norm Passmore, Chair

  
Michael Talbott, Commissioner

  
Merle Jackson, Commissioner

Attest:

  
Leanne Peters  
Clerk of the Board

Approved as to Form:

  
Dale Slack  
Deputy Prosecuting Attorney

RESOLUTION NO. 1362

A RESOLUTION TO THE CITY OF DAYTON, COLUMBIA COUNTY,  
WASHINGTON ADOPTING THE 2018 UPDATE OF THE COOPERATIVE  
PARKS MASTER PLAN IN CONJUNCTURE WITH COLUMBIA COUNTY  
AND THE PORT OF COLUMBIA

WHEREAS, the City of Dayton, Columbia County, and Port of Columbia worked simultaneously in 2014 to create the original Cooperative Parks Master Plan; and,

WHEREAS, the purpose of updating parks and recreation plans is to assess the parks and recreation facilities current use and repair levels and plan for the current and future recreation needs of the community; and,

WHEREAS, in order to remain eligible and competitive for grant opportunities, recreation plans such as the Cooperative Parks Master Plan must be updated every five years; and,

WHEREAS, each involved agency reviewed the current Cooperative Parks Master Plan and suggested edits to ensure accuracy of current information; and,

WHEREAS, Columbia County Planning acted as lead for this project update, and coordinated all requested updates into one coherent document; and,

WHEREAS, the City of Dayton Planning Commission held a duly advertised public hearing on December 18<sup>th</sup>, 2018 to take testimony for or against the proposed amendments to the plan; and,

WHEREAS, the City of Dayton Planning Commission recommended approval of the joint plan after review of a draft of the plan; and,

WHEREAS, the Dayton City Council recognize the City of Dayton Planning Commission's abilities to provide sound advice in land use issues together with providing the greatest possible benefits for the citizens of Dayton.

NOW, THEREFORE, the City Council of Dayton, Washington does hereby resolve as follows:

Section 1. The Cooperative Parks Master Plan is hereby adopted as the Park and Recreational Plan for the City of Dayton, Washington and that a certified copy of this

resolution and the Cooperative Park Master Plan shall be filed with the City Clerk for public use and inspection, and shall be filed with the State of Washington Recreation and Conservation Office.

Section 2. This Cooperative Park Master Plan shall be included as part of the City's 2020 Comprehensive Plan update by reference.

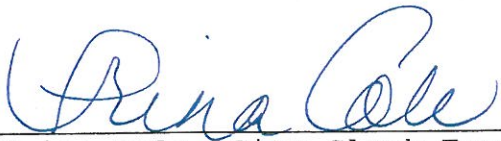
**PASSED** by the City Council of Dayton, Washington this 19<sup>th</sup> day of December, 2018.

City of Dayton



By: Craig George, Mayor

Attest:



Trina Cole, City Clerk-Treasurer

Approved as to form:



Quinn Plant, City Attorney

**RESOLUTION NO. 2018-05**

**A RESOLUTION ADOPTING THE 2018 UPDATED COOPERATIVE  
PARK MASTER PLAN (CPMP) FOR THE CITY OF DAYTON,  
COLUMBIA COUNTY AND PORT OF COLUMBIA**

**WHEREAS**, the City of Dayton, Columbia County, and Port of Columbia worked in tandem to integrate their respective parks and recreation plans into a unified regional plan titled "Cooperative Park Master Plan" (CPMP) for Columbia County, City of Dayton and Port of Columbia, and

**WHEREAS**, each jurisdiction adopted the integrated CPMP as part of their respective Comprehensive Plans in 2014, and

**WHEREAS**, the City of Dayton, Columbia County, and Port of Columbia recognize a need to update the CPMP periodically, and

**WHEREAS**, Columbia County served as the lead agency to prepare a CPMP update in 2018, and

**WHEREAS**, each jurisdiction was invited to provide guidance and input, and an updated CPMP, and

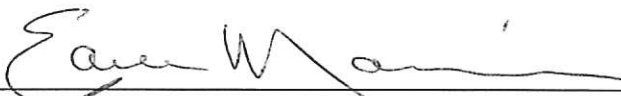
**WHEREAS**, the Port of Columbia Board of Commissioners have reviewed the updated 2018 CPMP, and

**WHEREAS**, a public hearing on the updated CPMP was held by the Port of Columbia Board of Commissioners on December 12, 2018, and


**NOW, THEREFORE**, the Port of Columbia Board of Commissioners hereby recommends inclusion of the updated 2018 CPMP in the Port's Comprehensive Plan.

**ADOPTED** by the Port of Columbia Board of Commissioners in Dayton, Washington this 12<sup>th</sup> day of December, 2018.

**PORT OF COLUMBIA BOARD OF COMMISSIONERS**

By:  \_\_\_\_\_

Earle Marvin, Chairperson

By:  \_\_\_\_\_

Fred Crowe

By: \_\_\_\_\_

Eugene Warren

RESOLUTION NO. 2019-01

A RESOLUTION TO THE TOWN OF STARBUCK, COLUMBIA COUNTY,  
WASHINGTON ADOPTING THE 2018 UPDATE OF THE COOPERATIVE  
PARKS MASTER PLAN IN CONJUNCTURE WITH COLUMBIA COUNTY,  
THE CITY OF DAYTON AND THE PORT OF COLUMBIA

WHEREAS, the City of Dayton, Columbia County, and Port of Columbia worked simultaneously in 2014 to create the original Cooperative Parks Master Plan; and,

WHEREAS, the Town of Starbuck opted in to this update process to adopt the Cooperative Park Master Plan with a Chapter dedicated specifically to Starbuck Parks and Recreation goals; and,

WHEREAS, the purpose of updating parks and recreation plans is to assess the parks and recreation facilities current use and repair levels and plan for the current and future recreation needs of the community; and,

WHEREAS, in order to remain eligible and competitive for grant opportunities, recreation plans such as the Cooperative Parks Master Plan must be updated every five years; and,

WHEREAS, each involved agency reviewed the current Cooperative Parks Master Plan and suggested edits to ensure accuracy of current information; and,

WHEREAS, Columbia County Planning acted as lead for this project update, and coordinated all requested updates into one coherent document; and,

WHEREAS, the City Council of Starbuck held a duly advertised public hearing on January 8<sup>th</sup>, 2019 at 6:05 pm to take testimony for or against the proposed amendments to the plan; and,

NOW, THEREFORE, the City Council of Starbuck, Washington does hereby resolve as follows:

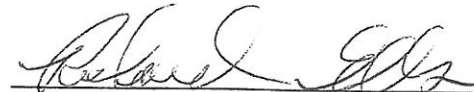
Section 1. The Cooperative Parks Master Plan is hereby adopted as the Park and Recreational Plan for the Town of Starbuck, Washington and that a certified copy of this resolution and the Cooperative Park Master Plan shall be filed with the City Clerk for public use and inspection, and shall be filed with the State of Washington Recreation and Conservation Office.



Section 2. This Cooperative Park Master Plan shall be included as part of the Town's 2020 Comprehensive Plan update by reference.

**PASSED** by the City Council of Starbuck, Washington this 9<sup>th</sup> Day of January, 2019.

Starbuck, Washington

  
By: Richard Ells, Mayor

Attest:

  
Jan Ells, City Clerk